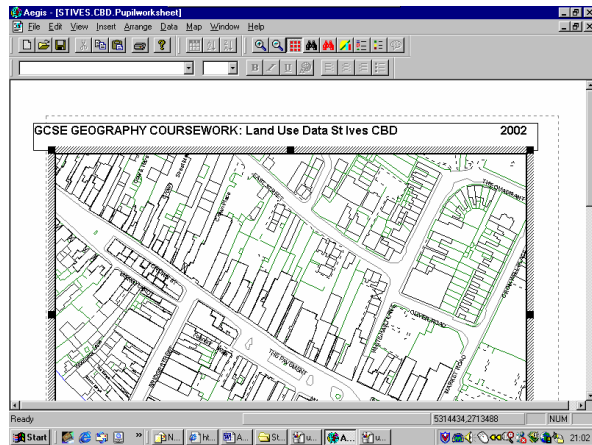




Plotting the Land-use data using AEGIS

All the land-use data you collected in your groups has been entered into a spreadsheet that is linked to a digital map of the four streets. You can now use AEGIS to plot the land-use data on the map. To do this now follow these simple instructions:



1. Go to Project Folders – Geography – AEGIS and open the file **St Ives_land_use_data**
2. Click on the map to make the map box active
3. Select  from the toolbar at the top to start the Plot Data Wizard
4. As we now want to shade the map to show land-use data select **Area Shading** and then click Next.
5. Select the **classification** box to plot the different type of land use.
6. Now choose suitable colours for the key (remember they should be easy to distinguish between the different types of land use)
7. Select **Finish** and the GIS will automatically shade the map.
8. To show the key now click 

To view the different streets you can move around the map. To do this, click on the map so the little hand appears and holding down the mouse button, move the map so that you can view the street that you want.

To focus on one particular street you can zoom in and out and /or re-size the map box (as you would do in WORD). Here is an example of a map of land-use in Bridge Street created using AEGIS.

